

▶ THE SAINT MARTIN



A 30' x 15' geometric-modern style pool with a 8' x 8' spa, and depths of 3.5' to 5.5'. In-ground made of gunite and pebble plaster.

This pool usually takes 30 to 45 days to build.



Scan the QR to see the gallery of **The Saint Martin**

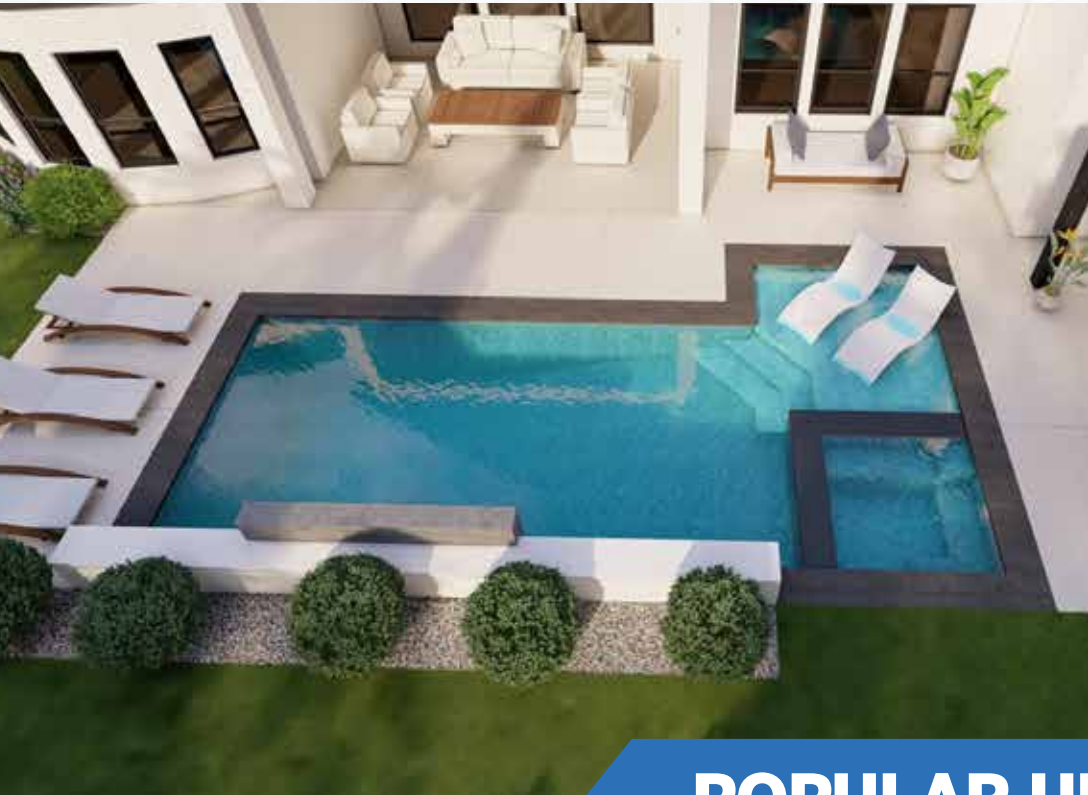
Features

- Heated Spa
- Two-levels raised wall
- 3 waterfall scuppers
- Color LED lights
- Automation system (with mobile app)
- Spa jets with blower
- Tanning ledge/Splash pad
- Up to 400sf of cool deck

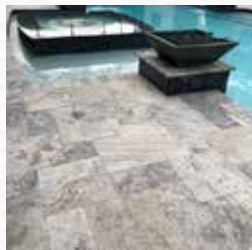
What you can choose

- Porcelain tiles for the waterline
- Water/plaster color
- Color of the deck

▶ THE SAINT MARTIN



POPULAR UPGRADES



Travertine Deck

Upgrade from Cool-Deck to Travertine pavers for a more luxurious look.



Pool Heater

Upgrade from 150k BTU to a 400k BTU heater that warms up the entire pool.



Glass Tile

If you prefer, you can upgrade the ceramic tiles to glass tiles.